



VAN GOOL

Calibration up to 350 Ton

The calibration of tension and compression cells up to 350t, is quick and easy with two rigs of Straightpoint/Crosby and accurate to Class 1.

The calibration rig, which will test force measurement equipment in tension and compression of load cells is specifically chosen based on its compatibility with UK-based load cell manufacturer Straightpoint's (SP; part of The Crosby Group) extensive range of products, which Van Gool distributes to the Dutch market.

What is calibration?

Calibration is the correlation of the readings of an instrument to check accuracy. Load cells—the wireless Radiolink plus is SP's most popular product—are calibrated upon manufacture or distribution, and recalibration is the periodic repetition of that process.

For which load cells?

The machine is designed using dimensions from SP's load cells ranging in capacity from zero to 350t, but additional load pins and reducing bushes will be included to house a much broader range of load cells.



know the load

Questions or an Inquiry?

+31 (0) 6 22 99 40 77



Calibrated by NMI,
an independent specialist in the
sector, to ISO 7500-1:2015t





VAN GOOL

How does it work?

The vertical universal machine is accurate to Class 1 and is designed to test standard industry size load links and compression cells to 350t. The unit itself is third-party calibrated by Holland's NMI, an independent specialist in the sector, to ISO 7500-1:2015, which specifies the calibration and verification of tension / compression testing machines. Tensile load cells will be calibrated in the lower section and compression load cells in the upper part of the frame.

Hydraulic ram

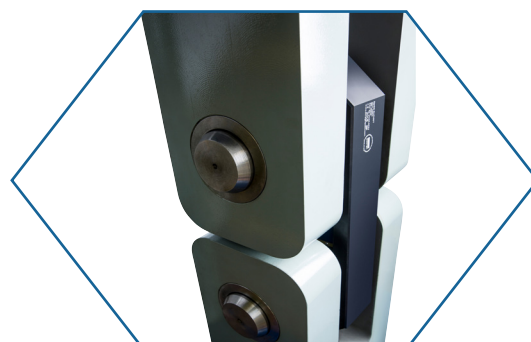
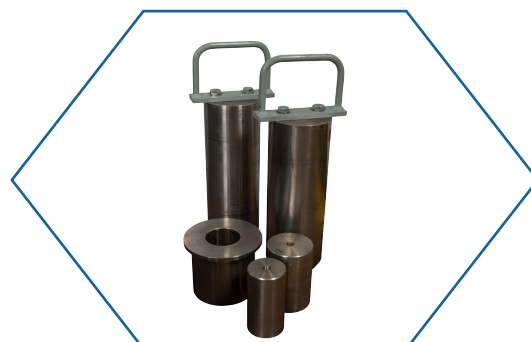
The Enerpac hydraulic ram is a standard double acting, 700 bar item that is controlled using a 230v, single phase, electric pump with a fine control valve. In use, the load application will be gradually increased using that control valve until test completion.

Why Van Gool?

We believe that we are the first lifting and rigging company in the world to have calibration capacity up to 350t, other than dedicated testing laboratories. The shortest possible lead times are assured. On request we can do multiple calibration rounds.

Other tensile and load tests

With an existing 35t dynamic testing system, a 55t tension testing rig, and a 100t static tensile testing machine. The latest addition means Van Gool will now calibrate equipment worldwide.



Inquiry or questions?

Please contact our staff via info@vangool.nl
or call +31 (0) 251 - 29 19 19.



lid
koninklijke
metaalunie



vca



Gaasterland 1
1948 RG Beverwijk
The Netherlands



+31 (0) 251 29 19 19



info@vangool.nl
www.vangool.nl